

Boardwalk

Roman Way

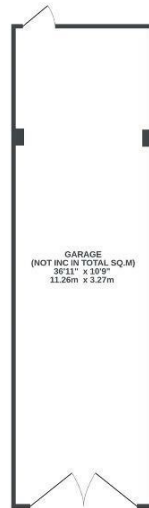
HANHAM, BRISTOL

14 Roman Way HANHAM

APPROXIMATE FLOOR AREA
127.5 SQM / 1373 SQFT



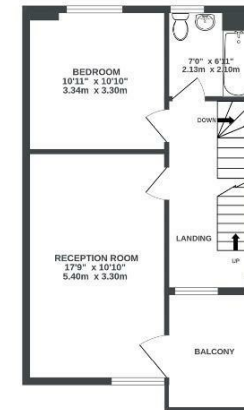
GARAGE
(NOT INC IN TOTAL SQ.M)
11.26m x 3.27m



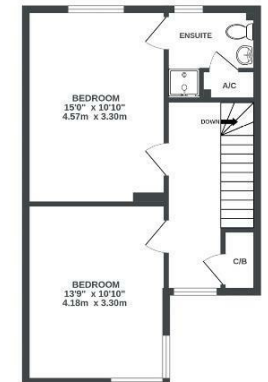
KITCHEN/DINER
46.6m² (502.8sqm) approx.



RECEPTION ROOM
45.7m² (493.8sqm) approx.



BEDROOM
46.6m² (502.8sqm) approx.



Illustrations are for reference purposes only, measurements are approximate, not to scale.

Boardwalk

Roman Way

HANHAM, BRISTOL

£

£500,000

zzz

4 Bedrooms



BS15 3FH



3 Bathrooms

"We have lived here for over eight years and still love the design of our home which is bright, spacious and calm. The garden is a sun trap and perfect for socialising and having BBQs on the patio or relaxing with a book on the outdoor sofas under the parasol. Spending time on the balcony overlooking the open green space outside the front is the perfect way to spend downtime with a book or a glass of wine watching the setting sun."

